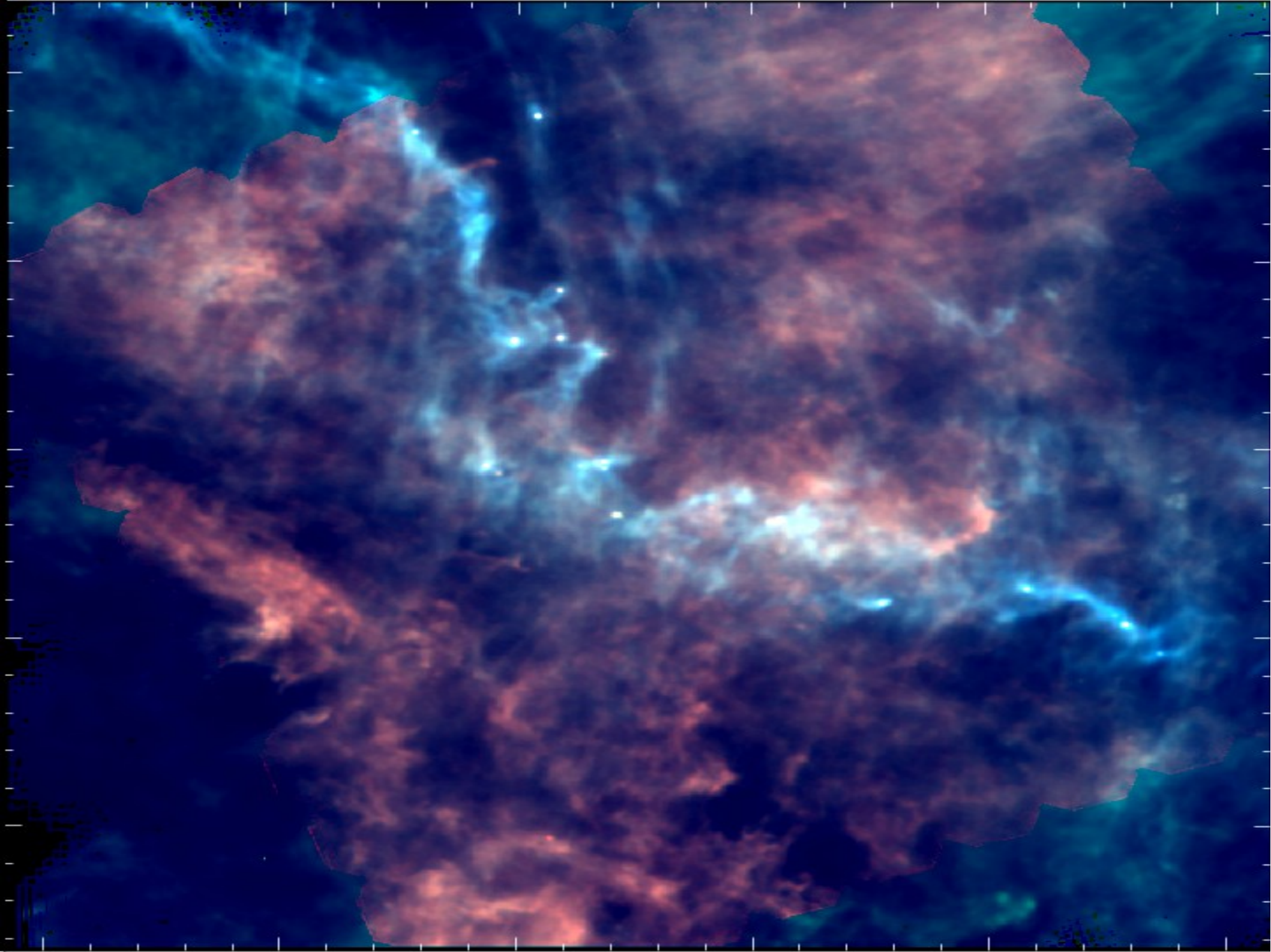


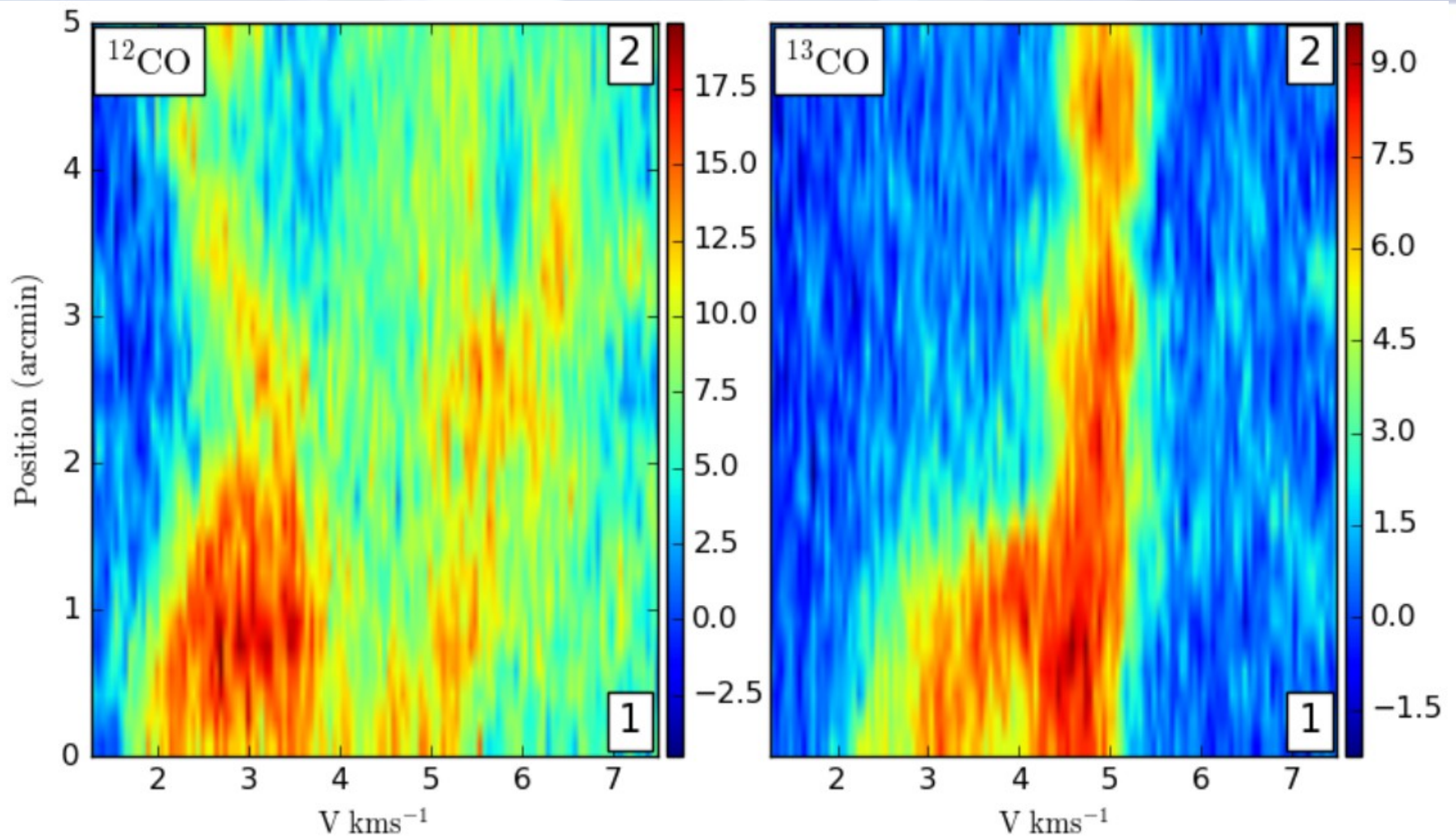
Correlation of gas dynamics and dust in the Herschel field G82.65-02.00

Mika Saajasto

PAP-PAPU-Christmas
meeting

12.12.2016





- Both ^{12}CO and ^{13}CO show a continuous structure, connecting the striation to the filament.

Distance estimate

- Previous estimate
 1000 ± 500 pc
- New estimate with
MACHETE
- Near infrared
extinction for two
masks
- Main filament at
 $620 \text{ pc} \pm 40 \text{ pc}$!
- Distance of
secondary
component still
uncertain

